




**SOPHISTICATED STYLES FOR THE MODERN EQUESTRIAN**



WHERE INNOVATIONS MEET DESIGN

WWW.ESTRELLEDESIGN.DE



A woman in equestrian attire, including a dark helmet and a long-sleeved top with a subtle pattern, stands next to a brown horse with a white blaze on its face. The horse is wearing a dark halter. They are positioned in front of a red brick wall. The overall scene is well-lit and professional.

TIMELESS + SMART

SUSTAINABLE

LUXURIOUS

HIGHEST COMFORT

A circular logo with a black background and white text. The letters 'T' and 'B' are intertwined in a stylized, serif font. The 'T' is on the left and the 'B' is on the right, with their stems overlapping.

TB

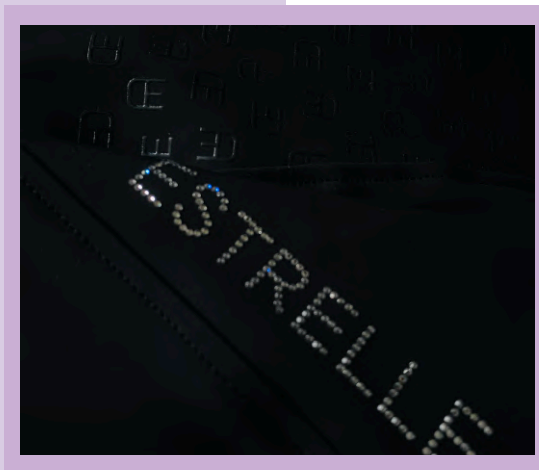
## WELCOME TO ESTRELLE

DISCOVER THE NEW  
GENERATION OF ADVANCED  
PREMIUM RIDING + HORSE  
WEAR INCLUDING  
INTERNATIONALLY AWARDED  
INNOVATIONS AND  
SOPHISTICATED & UNIQUE  
DESIGNS.



THE MODERN EQUESTRIAN  
RIDERS COLLECTION

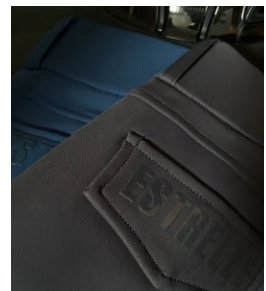
# BREECHES TO FALL IN LOVE WITH



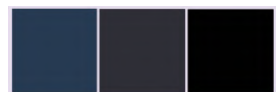
OUR BREECHES  
ARE MADE OF  
A  
FUNCTIONAL,  
BREATHABLE,  
BI-ELASTIC  
AND ODOR  
NEUTRALIZING  
FABRIC WHICH  
IS ALSO WATER  
AND DIRT  
REPELLENT.  
THE HIGH  
COMFORT IS  
COMPLETED  
BY THE  
SEAMLESS  
KNIT LEG ENDS  
WHICH ARE  
ADJUSTABLE  
IN WIDTH &  
LENGTH AND  
THE  
COMPRESSION  
TECHNOLOGY  
OF THE  
FABRIC.



### CRYSTAL DETAILS



### GLOSSY DETAILS

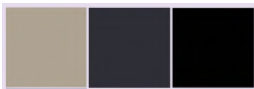




### CRYSTAL DETAILS

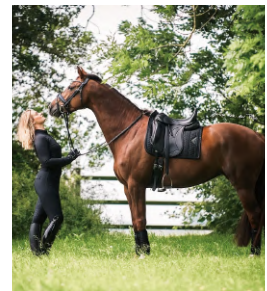
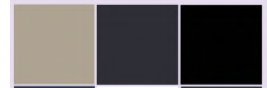


### PRINT DETAILS





PHONE  
POCKETS



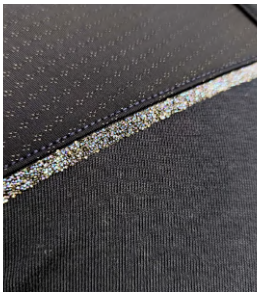
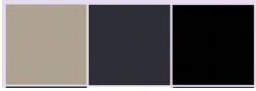
FABRIC MADE  
OF NATURAL  
MATERIALS







COMPRESSION  
FUNCTION



SUSTAINABLE RIDING  
SHIRT MADE OF  
TENCEL



SUSTAINABLE RIDING  
WEAR





## COMPETITION SEASON



ALL SEASON COMPETITION JACKET  
WITH CRYSTAL CHAIN DETAILS



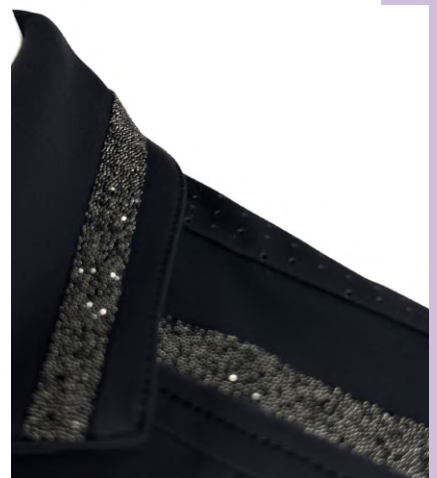
LUXURY VELVET COMPETITION JACKET



ALL SEASON COMPETITION JACKET WITH SHINY SATIN DETAILS



PERFORATED COMPETITION JACKET WITH CRYSTAL CHAIN DETAILS



NEW COMPETITION JACKET WITH PERFORATED FABRIC AND CRYSTALS



NEW COMPETITION SHIRT WITH  
CRYSTALS ON COLLAR



COMPETITION SHIRT WITH PERFORATED  
DETAILS



COMPETITION SHIRT WITH PRINT AND  
MESH DETAILS



WINTER JACKET WITH SUSTAINABLE  
FAKE DOWN FILLING



WINTER JACKET AND MATCHING VEST  
WITH JAQUARD DETAILS



PUFFY VEST WITH SUSTAINABLE FAKE  
DOWN FILLING

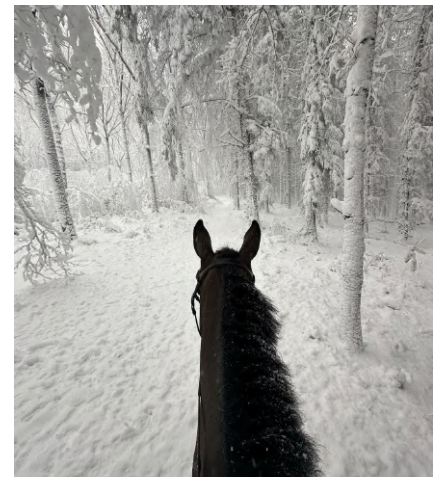


RAIN COAT WITH A BREATHABLE 2-LAYER SYSTEM



SOFTSHELL JACKET WITH QUILTED DETAILS

## SUSTAINABLE + COZY WINTER WEAR





EXTRAORDINARY  
AND  
FUNCTIONAL



LUXURY FAKE FUR RUG





PREMIUM HORSEWEAR  
COLLECTION

# SADDLEPADS TO MAKE THE RIDE EFFORTLESS



OUR  
SADDLEPADS  
ARE DESIGNED  
TO  
GUARANTEE  
THE HIGHEST  
LEVEL OF  
COMFORT AND  
TO FIT THE  
ANATOMY OF  
THE HORSES  
BACK  
PERFECTLY. ALL  
OUR  
SADDLEPADS  
HAVE A 3D AIR  
MESH BACK  
SEAM TO  
OPTIMIZE THE  
HEAT  
TRANSFER.  
COMBINED  
WITH A  
UNIQUE  
LUXURY  
DESIGN OUR  
SADDLEPADS  
ARE A MUST  
HAVE FOR  
EVERY  
EQUESTRIAN.



## ED-JERSEY GRIP TEC.

MODERN SADDLEPAD MADE OF A HIGHTECH JERSEY FABRIC, ANTI-SLIP SILICONE-GRIP AND A FUNCTIONAL COTTON PIQUE. DETAILS MADE OF VEGAN LEATHER AND CRYSTALS.



## ED-PARIS SOFTSHELL

THE PARIS SADDLEPAD HAS A SPORTY AND MODERN QUILTING DESIGN COMBINED WITH THE SOFTEST AND FUR-FRIENDLY BAMBOO LINING AND A CLASSY VEGAN LEATHER PIPING.



## ED-VELVET CRYSTAL

THE LUXURY VELVET SADDLEPAD HAS A PERFECT MIX OF TIMELESS ELEGANCE AND FUNCTIONALITY DUE TO THE 3D MESH BACK SEAM WHICH GUARANTEES OPTIMAL HEAT TRANSFER.



## ED-OCALA

A LUXURIOUS QUILTING, BRAIDED VEGAN LEATHER DETAILS COMBINED WITH AN EXTRA SOFT BAMBOO LINING - THESE ARE THE MAIN FEATURES OF THE OCALA SADDLEPADS.



## ED-CRYSTAL MESH

BREATHABLE MESH SADDLEPADS WITH BLACK DIAMOND DETAILS AND A MODERN METAL LOGO. THE CRYSTAL MESH SADDLEPADS MATCH OUR POPULAR COOL AIR TEC. BANDAGES AND LEG WRAPS PERFECTLY.

# COOL AIR TEC. MESH

spoga horse  
TOP INNOVATIONS  
WINNER 2022



PERFECT HEAT TRANSFER

QUICK DRYING + EASY CARE

OPTIMAL AIR FLOW

PRESSURE REDUCING

MOISTURE WICKING

3D AIR MESH BACK SEAM





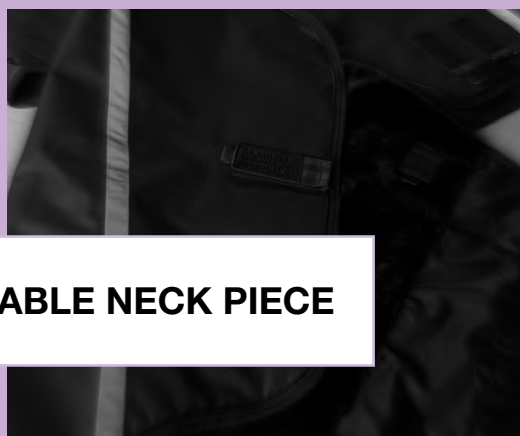
DISCOVER THE WHOLE RANGE OF OUR PRODUCTS ONLINE: [WWW.ESTRELLEDESIGN.DE](http://WWW.ESTRELLEDESIGN.DE)



# HORSE RUGS TO KEEP YOUR HORSE COMFY



**INDIVIDUAL BELLY  
SOLUTIONS**



**DETACHABLE NECK PIECE**



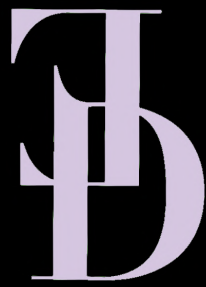
**PATENTED LINER SYSTEM**

DISCOVER THE  
NEW  
GENERATION OF  
PREMIUM HORSE  
RUGS WHICH  
ARE  
CHARACTERIZED  
BY AN  
INNOVATIVE  
LINER SYSTEM, A  
PERFECTLY FIT  
WITH FREE  
MOVEMENT,  
DETACHABLE  
ADD-ONS TO  
MATCH THE  
INDIVIDUAL  
NEEDS OF EVERY  
HORSE AND  
OPTIMAL  
DURABILITY.  
WETHER FOR  
THE STABLE OR  
THE FIELD, THE  
NEW RUG SERIES  
BY ESTRELLE  
OFFERS RUGS  
FOR EVERY  
WEATHER AND  
TEMPERATURE.

A NEW GENERATION OF  
HORSE RUGS  
BY ESTRELLE



ALL RUG MODELS CAN BE DISCOVERED ONLINE  
[WWW.ESTRELLEDESIGN.DE/RUG-SERIES](http://WWW.ESTRELLEDESIGN.DE/RUG-SERIES)



**KEEP AN EYE ON US**

**WWW.ESTRELLEDESIGN.DE**



**@ESTRELLEEQUESTRIAN**