

ESTRELLE

EXCELLENT EQUESTRIAN WEAR



WWW.ETRELLEDESIGN.DE

**ESTRELLE STANDS FOR MODERN & INNOVATIVE EQUESTRIAN WEAR.
WE CREATE LUXURY PREMIUM PRODUCTS FOR HORSE & RIDER
WITH A NEW STANDARD OF COMFORT AND FUNCTIONALITY.**

**OUR PASSION AND VISION OF MAKING THE BEST PRODUCTS
FOR HORSE AND RIDER IS UNIQUE. AS UNIQUE AS OUR
DESIGNS WHICH ARE LOVED BY NUMEROUS
EQUESTRIANS AROUND THE GLOBE.**

**DISCOVER OUR NEW PRODUCTS
NOW AND BECOME PART
OF ESTRELLE.**





SHIRT GRACE
SIGNATURE BREECHES







MARBELLA COMPETITION SHIRT

OC-012 BREECHES



OC-RAIN COAT



TECHNICAL CONTOUR JACKET



ED-ICONIC BREECHES



SHIRT GRACE & TEC. POLOSHIRT

**FROM SIMPLE TO EXTRAORDINARY.
FOR EVERYDAY AND EVERY CHALLENGE.**



EQUIPANTIES



COOL AIR TEC. SADDLEPAD



COOL AIR TEC. BANDAGES

INNOVATION + A TOUCH OF LUXURY NEVER GO OUT OF STYLE





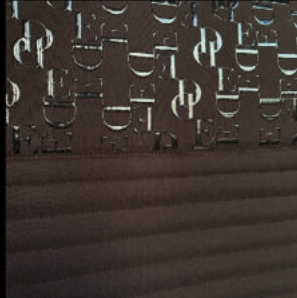


PREMIUM HORSEWEAR

FLEECE DELUX RUG WITH A SEAMLESS DESIGN ON THE BACK TO REDUCE PRESSURE, A SPARKLING DIAMOND BORDER ON THE SIDE AND VEGAN LEATHER DETAILS



THE TECHNICAL JERSEY GRIP SADDLEPAD COMBINES A LUYURX DESIGN AND HIGHEST FUNCTIONALITY TO ITS BEST: PERFECT SHOCK ABSORBING, BREATHABLE AND WITH A HIGH QUALITY GRIP



THE SUMMER MESH RUG IS THE PERFECT COMPANION ON WARM DAYS AND PROTECTS THE HORSE AGAINST ANNOYING INSECTS WHILE IT IS EXTREME BREATHABLE AND VENTILATED



THE LOVELY VELVET SADDLEPADS ARE MADE WITH A SPECIAL QUILTING AND A TIMELESS & LUXURY VELVET FABRIC. COMBINED WITH AN INNOVATIVE BACK SEAM AND HONEY COMB LINING



ALL PRODUCTS ARE AVAILABLE IN SOME MORE GORGEOUS COLORS. PLEASE VISIT OUR WEBSITE WWW.ESTRELLEDESIGN.DE AND DISCOVER THE WHOLE RANGE.

THE ALL SEASON VELVET RUG HAS AN LUXURIOUS QUILTED BACK WITH 100G FILLING TO PROTECT THE SENSITIVE BACK AREA AND A LOVELY THICK POLAR FLEECE ON THE SIDES WITH VEGAN LEATHER DETAILS



THE ALL SEASON BAMBOO JERSEY RUG TOGETHER WITH THE MATCHING TEC. JERSEY SADDLEPADS ARE ONE OF OUR FAVORITES. THE ECO-FIRENDLY AND SOFT BAMBOO LINING COMBINED WITH THE TECHNICAL JERSEY FABRIC ARE A GAMECHANGER



THE INTERNATIONALLY AWARDED COOL AIR TEC. IS ALSO USED IN OUR BLACK-DIAMOND SADDLEPADS EXTREME SHOCK ABSORBING, QUICK DRYING AND BREATHABLE



THE COZIEST RUG WITH A SOFT TEDDYFLEECE LINING AND AN ARTIFICIAL FUR OUTSIDE: OUR LUXURY FAKE FUR RUG IS ONE OF OUR BESTSELLERS



excellence in every aspect



**AWARD WINNING COOL AIR TEC.
BANDAGES & LEG WRAPS**



**MADE OF EXTREME BREATHABLE AIR MESH
PREVENT OVERHEATING
OPTIMIZED AIR FLOW AND HEAT TRANSFER
CAN BE USED UNDER WET CONDITIONS**

AVAILABLE IN BLACK AND WHITE



**100% PURE WOOL PLAID - THE ABSOLUTE ALLROUNDER FOR HORSE, STABLE AND HOME
NATURAL COLORS AND A SOFT TOUCH COMBINED WITH OUR ICONIC LOGO PATTERN**

**A NEW GENERATION OF OUTDOOR RUGS: SOPHISTICATED DESIGN WITH BELLY PROTECTION AND
SOFT FAKE FUR LINING ON THE BACK WHICH REDUCES THE PRESSURE ON THE SPINE AND
GUARANTEES HIGHEST COMFORT, 1200 DENIER NYLON, A REMOVABLE NECK AND VEGAN LEATHER DETAILS
AVAILABLE IN 0 G, 100 G AND 250 G FILLING**



ESTRELLE

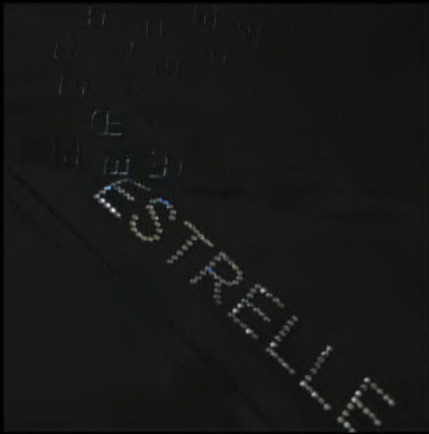


created to last a lifetime



PADDED RIDING JACKET

OC-011 RIDING TIGHTS

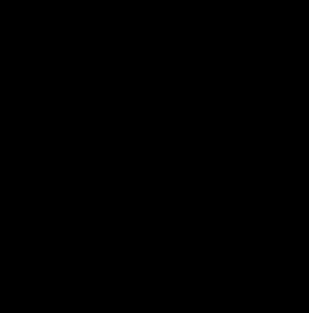




a new approach to riding

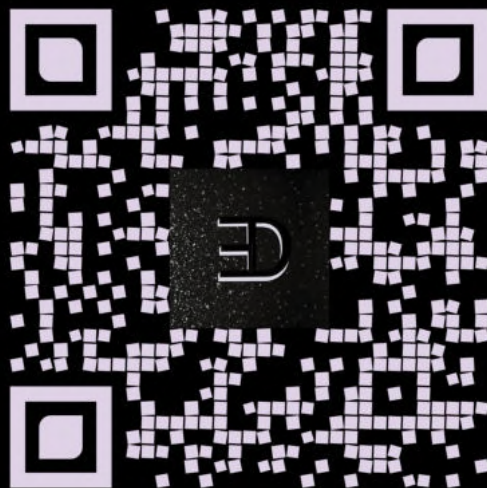


focusing on what really matters





**SHOP OUR STYLES NOW OR
REGISTER AS A B2B CLIENT**



WWW.ESTRELLEDISEIGN.DE



WWW.ESTRELLEDESIGN.DE